

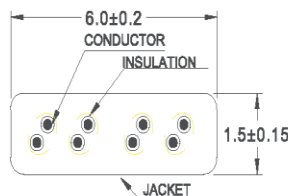
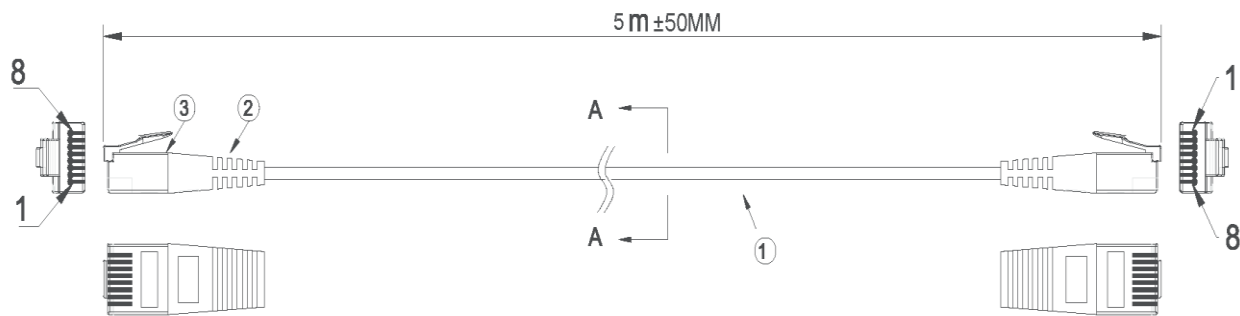
## CAT 6 FLAT PATCH CORDS



**CAT6 Flat, LSZH patch cord, Blue, 5m**


**Part Number: 136/0005BL**

RoHS COMPLIANT



SEC:A-A



**ELECTRICAL TEST:**

1. 100% OPEN&SHORT TEST
2. CONTACT RESISTANCE: 2 OHM (MAX)
3. INSULATION RESISTANCE: 10 MOhm (MIN) DC 300V/10mS
4. Packing: each flat patch cable packed in one polybag, and 5\*3cm label stick in the middle of polybag
5. Cable Printing: DATAMASTER  E4073 VERIFIED CAT6 PATCH CORD ANSI/TIA 568 A/B/568C.2 #32AWG 4PR

WIRE CONNECTION

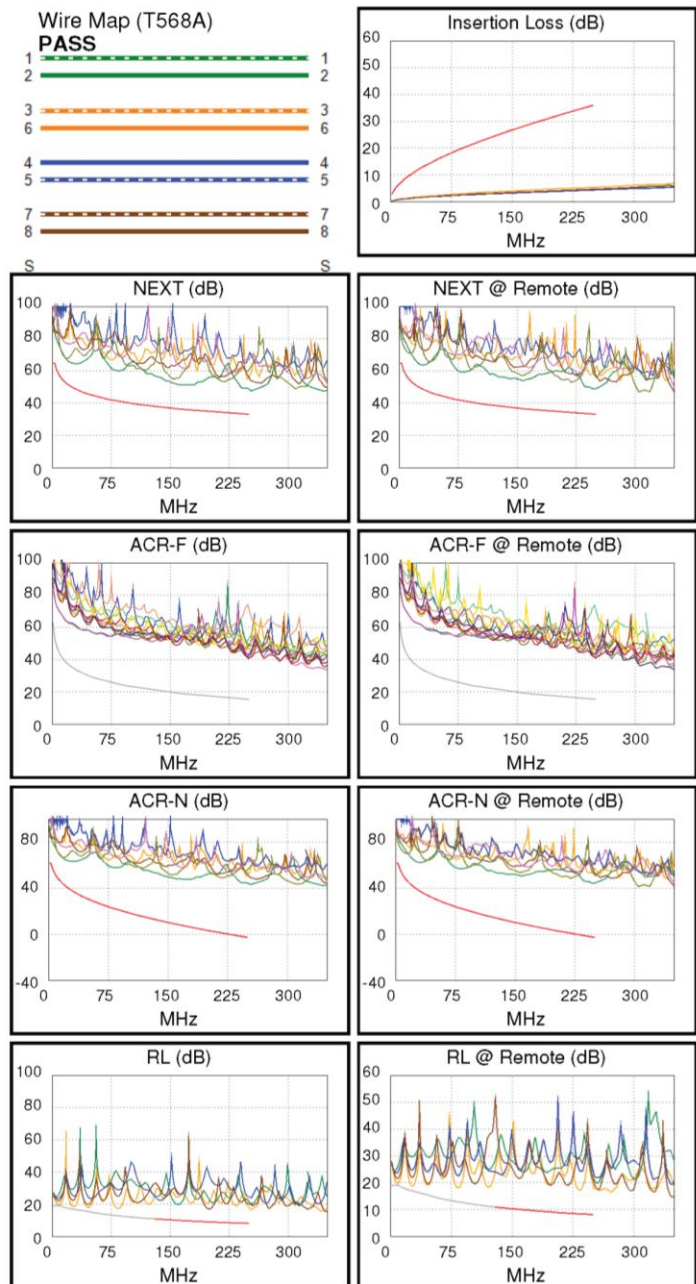
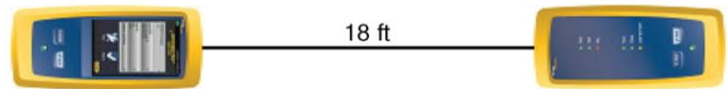
COLOR (568A)	P1	PAIRS	P2
WHITE/GREEN	1	---	1
GREEN	2	---	2
WHITE/ORANGE	3	---	3
BLUE	4	---	4
WHITE/BLUE	5	---	5
ORANGE	6	---	6
WHITE/BROWN	7	---	7
BROWN	8	---	8

3	RJ45 PLUG: 8P8C GOLD PLATED TWO-PIECE PLUG.	
2	MOLDED: BLUE LSZH MOLDED BOOT.	
	CABLE: CAT 6 UTP 32AWG(7/0.08 BC) 4PAIR OD=1.5±0.15*6.0±0.2mm	
1	BLUE LSZH JACKET.	
	MARKING:	
NO.	SPECIFICATION	QTY
	BOM LIST	

ITEM NO:	CAT 6 UTP		DRAWER DATE	LY
TITLE			CHECKED DATE	MTC
CUSTOMER			APPROVED DATE	20160601
MATERIAL	SCALE			
REV. A	UNIT	MM		
DRAWING NO:				
ACAD FILE	E:}			

### TEST SUMMARY:

Length (ft), Limit 328	[Pair 12]	18
Prop. Delay (ns), Limit 555	[Pair 12]	26
Delay Skew (ns), Limit 50	[Pair 12]	0
Resistance (ohms)		N/A
Insertion Loss Margin (dB)	[Pair 12]	30.5
Frequency (MHz)	[Pair 12]	250.0
Limit (dB)	[Pair 12]	35.9



Worst Case Margin Worst Case Value

PASS	MAIN	SR	MAIN	SR
Worst Pair	12-45	12-45	12-45	12-45
<b>NEXT (dB)</b>	14.6	14.5	15.2	15.6
Freq. (MHz)	21.4	27.0	250.0	249.0
Limit (dB)	51.2	49.5	33.1	33.1
Worst Pair	45	36	12	45
<b>PS NEXT (dB)</b>	16.8	15.4	17.3	18.0
Freq. (MHz)	19.5	3.5	250.0	250.0
Limit (dB)	49.2	61.5	30.2	30.2

PASS	MAIN	SR	MAIN	SR
Worst Pair	45-36	36-45	45-36	36-45
<b>ACR-F (dB)</b>	25.3	25.5	25.3	25.5
Freq. (MHz)	250.0	250.0	250.0	250.0
Limit (dB)	15.3	15.3	15.3	15.3
Worst Pair	36	45	36	36
<b>PS ACR-F (dB)</b>	25.4	25.0	25.4	25.6
Freq. (MHz)	250.0	1.0	250.0	250.0
Limit (dB)	12.3	60.3	12.3	12.3

N/A	MAIN	SR	MAIN	SR
Worst Pair	12-45	36-78	12-45	12-45
<b>ACR-N (dB)</b>	21.5	17.9	46.7	47.0
Freq. (MHz)	3.3	2.9	250.0	249.0
Limit (dB)	60.9	61.6	-2.8	-2.7
Worst Pair	12	36	12	12
<b>PS ACR-N (dB)</b>	21.8	18.9	47.9	48.5
Freq. (MHz)	3.3	3.5	250.0	248.5
Limit (dB)	58.4	57.7	-5.8	-5.6

PASS	MAIN	SR	MAIN	SR
Worst Pair	78	12	78	12
<b>RL (dB)</b>	7.8	7.0	7.8	8.7
Freq. (MHz)	199.5	121.5	199.5	233.5
Limit (dB)	9.0	11.2	9.0	8.3

Compliant Network Standards:

10BASE-T	100BASE-TX	100BASE-T4
1000BASE-T	ATM-25	ATM-51
ATM-155	100VG-AnyLan	TR-4
TR-16 Active	TR-16 Passive	