
DIAMOND HYBRID JUNCTION BOX, 6-WAY

Part Number: 122/003

Features

- **Easy Installation Connectivity**
 - Modular ‘plug and play’ hybrid system
 - Rotatable feeder connector for easy pole mounted installation
 - Adjustable mounting bracket system.
 - Up to 24 optical fibers in high performance MTP elite connectivity
 - Hi-power electrical contacts up to 60 Amps @ -48V
 - Designed to meet Australian conditions
 - Locating connector marks
 - Connector Positioning brackets
 - Earth Lug Externally mounted
 - Breather pressure regulator
- **Light & Durable Material**
 - Powder-coated Aluminum enclosure and bulkheads
 - IP68 rate
 - Includes mounting bracket
- **Customized product**
 - Options are available upon customer`s requirement



Application

This box is applied on a mobile mast servicing a number of Radio Units (RRU) for Mobiles services. It provides Fibre connectivity through the CIPRI optical physical connection and -48V power integrated through the Hybrid incoming and outgoing connectors.

The main connector houses the relevant pairs of power connections in addition with the 24cores of fibre connectivity through an MTP Elite interface.

The main connector system is rotatable + and – 180 Degree in order to properly align the incoming cable once the bracket has been installed in the correct position on the mast.

The brackets provided are stainless steel 5mm construction and have the capability to correctly position the box on the mast in order to avoid mistakes with connector insertion. Correct

Please contact Diamond Optics at info@diamond-fo.com.au for more options or specific requirements for your application.

Note: Data sheet is copyright and remains the property of Diamond Optics. Draft Issue 1 -2017

alignment marks are applied to both the male and female main connectors allowing for ease of connection with a high reliability. Once the connection has been made and torqued to the correct setting with the tool provided then the locking nut will hold both connectors in position for a reliable long-term connection.

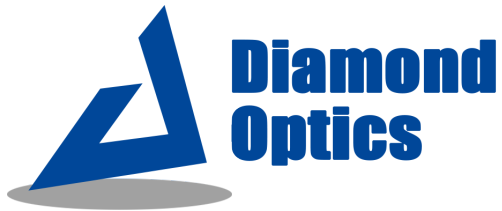
Application notes are provided with this product.

Specification

Construction		2RRU	4RRU	6RRU
Part Number		122/001	122/002	122/003
Size	Depth	160mm	160mm	160mm
	Length	280mm	370mm	370mm
	Width	84mm	84mm	160mm
Weight		4.0 kg	5.0 kg	7.0 kg
Material		Powder Coated Aluminum		
Color		APO Grey		
Mounting Bracket		Pole mount / Wall mount		
Feeder Connector	DC Range	6 mm ² 10mm ²	6mm ² 10mm ²	6mm ² 10mm ²
	Quantity	X 2 power x1 optical MTP	X 4 power x1 optical MTP	X 6 power x1 optical MTP
Jumper Connector		Hybrid type x4 optical ceramic sleeve x 2 power	Hybrid type x4 optical ceramic sleeve X 4 power	Hybrid type X4 optical ceramic sleeve X 6 power
Optical Performance				
IL at 1310 and 1550nm		IEC Grade B <0.25dB /connector	IEC Grade B <0.25dB /connector	IEC Grade B <0.25dB /connector
RL at 1310 and 1550nm		IEC Grade B Better than 55dB	IEC Grade B Better than 55dB	IEC Grade B Better than 55dB
Power contact Performance		60Amps Temp rise <10 C at full power	60Amps Temp rise <10 C at full power	60Amps Temp rise <10 C at full power
Environmental Performance				
Ingress Protection			IP 67	
Temperature	Operating	-30 °C ~ +70 °C		
	Installation	-20 °C ~ +70 °C		

Please contact Diamond Optics at info@diamond-fo.com.au for more options or specific requirements for your application.

Note: Data sheet is copyright and remains the property of Diamond Optics. Draft Issue 1 -2017



Diamond Optics Pty Ltd.

ABN: 94 161 657 110

36 Cromer Ave, Sunshine North, VIC 3020

Tel: +61 (03) 9366 8382

Email: info@diamond-fo.com.au

Other Related Products

- RRU Jumpers single and double in 1.5m, 2.5m, 3.5m, 5m and 7.5m. Bird Proofed. Nylon 66
- Main cable assemblies 30m, 40m, 50m, 60m, 70m, 80m, 90m & 100m as standard or specific lengths as required.
- Base station connectivity solutions, 1RU LGX style sub rack with MTP to LC cassettes and fibre storage trays.

Please contact Diamond Optics at info@diamond-fo.com.au for more options or specific requirements for your application.

Note: Data sheet is copyright and remains the property of Diamond Optics. Draft Issue 1 -2017