

High Density Modular Sub-Rack System – 1RU Cassettes- SM

Part Number: 125/015x-x



PRODUCT DETAILS

The Diamond Optics high density modules allow for connectivity within the main sub-rack PN 125/0100 to be realized with ease. Modules of various capacities and designs are offered to allow for full flexibility within a customer's network design requirements. Optical performance criteria on the standard product is of the lowest possible loss or excess loss in connectivity and coupling. All standard cassettes meet Telstra Grade A optical performance criteria (I.L. <0.15dB randomly mated) and Telstra component performance requirements unless otherwise specified.

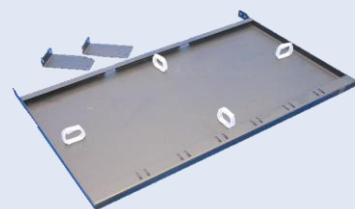
FEATURES

- Modular with 4 Cassette capacity.
- 1RU High Density up to 144 LC ports fully loaded.
- Modular Cassettes up to 36 LC capacity.
- Optional splitters, DWDM devices, MTP to LC, MTP to SC etc.
- Allows modularity in functionality for optics services
- Plug and Play
- Integrated front and rear panel fibre management
- IEC Grade A connectivity with very high tolerance devices.
- Front access for all devices
- Rear access for MTX or MTP Elite connections.
- Optional RFID cable management system available.
- Designed and manufactured in Australia.

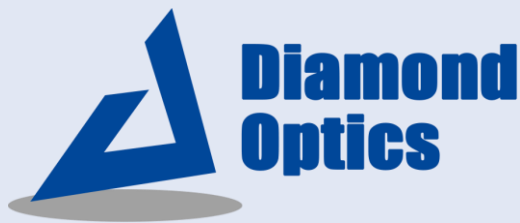
RELATED PRODUCTS



1RU sub-rack



Rear fibre management extension tray

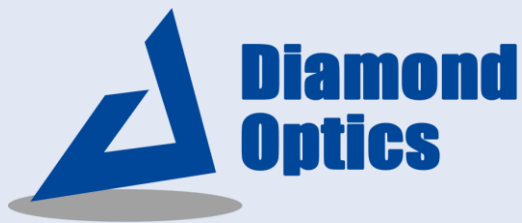


Service the industry with high-performance & cost-effective solutions

High Density Modular Sub-Rack System – 1RU Cassettes- SM

Ordering Information

Part Number	Rear cassette ports	Port quantity	Front cassette ports	Port quantity	Polarity		
Conversion cassettes							
125/0150	MTP 12	2	LC	24	Telstra Mobiles Spec		
125/0151-1	MTP 12	1	LC	12	A		
125/0151-2					B		
125/0151-3					C		
125/0152-1		2		24	A		
125/0152-2					B		
125/0152-3					C		
125/0153-1		3		36	A		
125/0153-2					B		
125/0153-3					C		
125/0154-1		1		12	SC/A	N/A	
125/0154-2					SC		
125/0155-1				2	24		SC/A
125/0155-2							SC
125/0156-1		MTP 24		1	LC	24	A
125/0156-2						B	
125/0156-3						C	
125/0161-1	-	-	Front plate	6			
125/0161-2	-	-	MTP 12	9			
125/0161-3	-	-	Front Plate	6			
125/0161-4	-	-	MTP 24	9			
125/0162	Blanking plate for 4 way HD panel						
Splitter Cassettes							
125/0166-1	-	-	LC	36	50:50		
125/0166-2			LC	36	70:30		
125/0166-3			LC	36	80:20		
125/0166-4			LC	36	90:10		
125/0166-5			LC	36	95:05		



Service the industry with high-performance & cost-effective solutions

High Density Modular Sub-Rack System – 1RU Cassettes- SM

Ordering Information

Part Number	Rear cassette ports	Port quantity	Front cassette ports	Port quantity	Polarity
Conversion cassettes					
125/0157-1	MTP 48	1	LC	48	A
125/0157-2					B
125/0157-3					C
125/0158-1		-	Front Plate	4	N/A
125/0158-2			MTP 48	8	
125/0171	-	-	Front Plate LC	12	N/A
125/0159	Blanking plate for 3 way HD panel)				
125/0179	Attenuator Cassette- 4 way- LC/APC				
Monitoring Splitter Cassettes					
125/0166A	-	-	LC	36	Telstra Spec
125/0172P	MTP 12	2	LC	8	Telstra Spec